

PowerBreaker **PROTEKT**

IP66 Weatherproof Range



GreenBrook are pleased to introduce their new

'PowerBreaker ProteKT' IP66 Weatherproof Range

including Switches, Sockets, Spurs & RCDs.

Using the latest PowerBreaker technology these accessories can be used for long term projects in all weather conditions.

The IP66 rating protects against both water and dust.

**5 Year
Warranty**

**UV
Resistant**

**IP66
Protected**

**For
Domestic &
Commercial
use**

IP66 RESISTANT TO WATER JETS & DUST

Weatherproof Switched Single & Twin Socket

- Weatherproof to IP66 with plug inserted and lid closed
- Can be used for long term projects in all weather conditions
- 20mm Knock outs

Technical Information

Rated Voltage:

13A, 230 ~ 240V 50Hz

Dimensions:

PSKT1G - W131 x H119 x D80mm

PSKT2G - W179 x H130 x D80mm

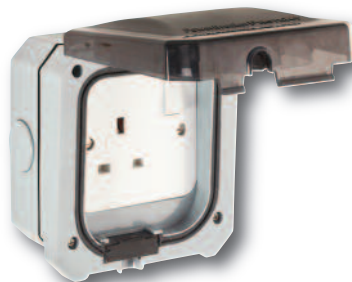
Socket Conforms To:

BS1363-2

IP Box Conforms To:

BS 1363, IEC 60670-1 & IEC 60670-22

Part No	Description
PSKT1G	Weatherproof Switched Single Socket
PSKT2G	Weatherproof Switched Twin Socket



PowerBreaker **PROTEKT**

Weatherproof Twin RCD Socket - Active

- Weatherproof to IP66 with plug inserted and lid closed
- Can be used for long term projects in all weather conditions
- Uses PowerBreaker RCD technology
- High intensity LED power-on-indicator
- Double pole RCD action
- Twin earth Terminals
- 20mm Knock outs

Technical Information

Rated Voltage:	230V AC ~ 50Hz
Maximum operating current:	13A (13A inductive)
Rated Trip current:	30mA
Trip speed:	Less than 20mS (typical)
RCD contact break:	Double pole
Electrical latching:	Active - Needs to be reset after a power failure
Enclosure Dimensions:	W195 x H149 x D80mm
Independently tested to:	BS 7288:1990, BS 1363-2:1995, BS EN 61543:1996
IP Box Conforms To:	IEC 60670-1 & IEC 60670-22



Active RCDs require the user to re-set them after they trip, avoiding unexpected restarting of equipment

Part No	Description
PSKTRCDA2G	Weatherproof Twin RCD Socket - Active

Weatherproof Twin RCD Socket - Passive

- Weatherproof to IP66 with plug inserted and lid closed
- Can be used for long term projects in all weather conditions
- Uses PowerBreaker technology
- High intensity LED power-on-indicator
- Double pole RCD action
- Twin earth Terminals
- 20mm Knock outs

Technical Information

Rated Voltage:	230V AC ~ 50Hz
Maximum operating current:	13A (13A inductive)
Rated Trip current:	30mA
Trip speed:	Less than 20mS (typical)
RCD contact break:	Double pole
Electrical latching:	Passive - Does not need resetting after a power failure
Enclosure Dimensions:	W195 x H149 x D80mm
Independently tested to:	BS 7288:1990, BS 1363-2:1995, BS EN 61543:1996
IP Box Conforms To:	IEC 60670-1 & IEC 60670-22



Passive RCDs do not require the user to re-set them after they trip, so will return to normal operation when the power resumes

Part No	Description
PSKTRCDP2G	Weatherproof Twin RCD Socket - Passive

Foam seal inhibits ingress of dust or water by clamping around the cable



PowerBreaker **PROTEKT**

Weatherproof RCD Fused Spur

- Weatherproof to IP66
- Can be used for long term projects in all weather conditions
- Uses PowerBreaker technology
- High intensity LED power-on-indicator
- Double pole RCD action
- Twin earth terminals
- 20mm Knock outs

Technical Information

Rated Voltage:	230V AC ~ 50Hz
Maximum operating current:	13A (13A inductive)
Rated Trip Speed:	Less than 20mS (typical)
Rated Trip Current:	30mA
Terminal capacity:	6mm ² max
RCD contact break:	Double pole
Mechanically Latching:	Passive - Mechanically latched - Does not need resetting after a power loss
Dimensions:	W137 x H132 x D80mm
Cord anchorage -	
Cable Dia:	4.6mm - 10.4mm
Cable Size:	0.5mm ² to 1.5mm ²
Independently tested To:	BS 7288:1990, BS 1363-4:1995, BS EN 61543:1996
IP Box Conforms To:	IEC 60670-1 & IEC 60670-22



Part No	Description
PSPRCD1G	Weatherproof RCD Fused Spur



7 Day Fused Timer Spur Switch

- Weatherproof to IP66
- Can be used for long term projects in all weather conditions
- Energy saving
- Ideal for control of: - Outdoor Lighting, Ponds, Sprinkler systems
- 28 On and Off settings
- Large backlit LCD display
- Easy set - Day / 5 Day / 7 Day blocks
- 'Boost' & 'Advance' controls
- Easy to program
- 700 hrs battery life

Technical Information

Display:	LCD
Working Voltage:	230V ~ 50Hz
Rated Impulse Voltage:	2,500V
Operating Temp:	-5°C to +40°C
Operation:	Integrated Control
Max Load:	
Resistive -	13A
Inductive -	6A
Isolation Switch:	Double pole isolation
Dimensions:	W137 X H132 X D80mm
Conforms to:	BS 1363-4:1995+A4:2012
	BS EN 60730-1:2011
	BS EN 60730-2-7:2010
IP Box Conforms to:	IEC 60670-1 & IEC 60670-22



Part No	Description
PSPT1G	7 Day Fused Timer Spur Switch

With Boost Option



PowerBreaker **PROTEKT**

Weatherproof 1 & 2 Gang Switch

- Can be used for long term projects in all weather conditions
- IP66 Switched:
 - 1 gang = 2 Pole
 - 2 gang = 2 Pole
- Two way operation

Technical Information

Rated Voltage:

10AX, 230 ~ 240V 50Hz

Dimensions:

W97 x H97 x 65mm

Conforms To:

BS EN 60669-1 & BS EN 61058-1

Part No	Description
PSW1G2W	Weatherproof 1 Gang Switch
PSW2G2W	Weatherproof 2 Gang Switch



sales@greenbrook.co.uk



www.greenbrook.co.uk

PowerBreaker **PROTEKt**

Weatherproof Single & Twin Enclosure

- Weatherproof to IP66
- Can be used for long term projects in all weather conditions
- Ideal for use with standard wiring accessories
- Easy Mounting

Technical Information

Dimensions:

PENC1G - W137 x H132 x D80mm

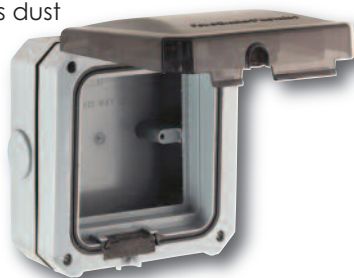
PENC2G - W195 x H149 x D80mm

Independently
tested to:

IEC 60670-1 & IEC 60670-22

PowerBreaker ProteKt products are suitable for use outdoors in severe conditions of rain and water spray as well as dust combination to IP66 as defined by BS EN 60529.

Part No	Description
PENC1G	Weatherproof Single Enclosure
PENC2G	Weatherproof Twin Enclosure



Dealer Stamp

Issue No: 704593

**GREEN
BROOK**
ELECTRICAL

T 01279 772 772

F 01279 422 007

E sales@greenbrook.co.uk

W www.greenbrook.co.uk