



GREEN BROOK ELECTRICAL



LED Fire Rated Downlights

VELA *Advance*



VELA **COMPACT**



the **LIA**

MEMBER

- ▶ Certified for 30, 60 or 90 minute fire rated ceilings
- ▶ Complete with quick connect driver
- ▶ Loop in, loop out connections on driver
- ▶ Matt white finish
- ▶ Additional bezels available - Gold, Matt Black, Satin Chrome & Polished Chrome
- ▶ Conforms to Part B, C, E & L

Fixed Fittings - 3000K & 4000K

Fixed - 3000K - IP65

Part No: ADV3000W

Cut Out: 73mm

Total Lumens: 820

Fixed - 4000K - IP65

Part No: ADV4000W

Cut Out: 73mm

Total Lumens: 850



Tilt Fittings - 3000K & 4000K

Tilt - 3000K - IP65

Part No: ADVT3000W

Cut Out: 83mm

Total Lumens: 820

Tilt - 4000K - IP65

Part No: ADVT4000W

Cut Out: 83mm

Total Lumens: 850



Anti-Glare Fittings - 3000K & 4000K

Anti-Glare - 3000K - IP65

Part No: ADVAG3000W

Cut Out: 73mm

Total Lumens: 670

Fixed - 4000K - IP65

Part No: ADVAG4000W

Cut Out: 73mm

Total Lumens: 690



Replacement Bezels

For Fixed Fittings

| Part No | Finish |
|----------|-----------------|
| ADVBEZSC | Satin Chrome |
| ADVBEZPC | Polished Chrome |
| ADVBEZMB | Matt Black |
| ADVBEZG | Gold |



For Tilt Fittings

| Part No | Finish |
|-----------|-----------------|
| ADVTBEZSC | Satin Chrome |
| ADVTBEZPC | Polished Chrome |
| ADVTBEZMB | Matt Black |
| ADVTBEZG | Gold |



For Anti-Glare Fittings

| Part No | Finish |
|------------|-----------------|
| ADVAGBEZSC | Satin Chrome |
| ADVAGBEZPC | Polished Chrome |
| ADVAGBEZMB | Matt Black |
| ADVAGBEZG | Gold |



Technical Information

| | ADV3000W | ADV4000W | ADVT3000W | ADVT4000W | ADVAG3000W | ADVAG4000W |
|----------------------------|------------------------------|----------------|-------------------------------|----------------|----------------|----------------|
| Product Finish | White | | | | | |
| Downlight Style | Fixed | | Tilt | | Anti-Glare | |
| Cut out | 73mm | | 83mm | | 73mm | |
| Size | W85 x H61mm | | W95 x H67mm | | W85 x H72mm | |
| Product weight | 330g | | 395g | | 346g | |
| Barcode | 5012739 645082 | 5012739 645099 | 5012739 645105 | 5012739 645129 | 5012739 645112 | 5012739 645136 |
| IP Rating | IP65 | | | | | |
| Lamp Type | LED | | | | | |
| Beam Angle | 55° | | | | | |
| Colour Temp | 3,000K | 4,000K | 3,000K | 4,000K | 3,000K | 4,000K |
| Tilt Angle | N/A | | 30° Inclusive (15° each side) | | N/A | |
| Class | II | | | | | |
| Luminaire Lumens Output | 820, 90 lm/W | 850, 92 lm/W | 820, 90 lm/W | 850, 92 lm/W | 670, 73 lm/W | 690, 77 lm/W |
| Voltage | 230V ~ 50Hz | | | | | |
| Wattage | 9W | | | | | |
| CRI | >85 | | | | | |
| Ballast Type | LED Driver | | | | | |
| Guarantee | 5 year | | | | | |
| Certification & Conformity | Conforms to Part B, C, E & L | | | | | |

Dimmers

The VELA *Advance* range of downlights are designed to be compatible with both leading edge and trailing edge dimmers.

GreenBrook have tested a selection of dimmers for compatibility with our product range...



| Dimmer Specification | | Number of Fittings | | | | | | | | | | | |
|------------------------|--------------|--------------------|---|---|---|---|---|---|---|---|----|----|----|
| Manufacturer Name | Dimmer Model | 1 | 2 | 3 | 4 | 5 | 6 | 7 | 8 | 9 | 10 | 11 | 12 |
| Varilight | JQP401W | ✓ | ✓ | ✓ | ✓ | ✓ | ✓ | ✓ | ✓ | ✓ | ✓ | ✓ | ✓ |
| Hamilton | H-LEDSTAT | ✓ | ✓ | ✓ | ✓ | ✓ | ✓ | ✓ | ✓ | ✓ | ✓ | ✓ | ✓ |
| Hamilton | LEDITB100 | ✓ | ✓ | ✓ | ✓ | ✓ | ✓ | ✓ | ✓ | ✓ | ✓ | ✓ | ✓ |
| Zano | ZGRIDLED | ✓ | ✓ | ✓ | ✓ | ✓ | ✓ | ✓ | ✓ | ✓ | ✓ | ✓ | ✓ |
| Schneider | GU6012C | ✓ | ✓ | ✓ | ✓ | ✓ | ✓ | ✓ | ✓ | ✓ | ✓ | ✓ | ✓ |
| Schneider | GGBL6012LS | ✓ | ✓ | ✓ | ✓ | ✓ | ✓ | ✓ | ✓ | ✓ | ✓ | ✓ | ✓ |
| Danlers | DQDGEU400W | ✓ | ✓ | ✓ | ✓ | ✓ | ✓ | ✓ | ✓ | ✓ | ✓ | ✓ | ✓ |
| British Electric Lamps | KDM250PL | ✓ | ✓ | ✓ | ✓ | ✓ | ✓ | ✓ | ✓ | ✓ | ✓ | ✓ | ✓ |
| Deta | S1253 | x | ✓ | ✓ | ✓ | ✓ | ✓ | ✓ | ✓ | ✓ | ✓ | ✓ | ✓ |
| MK | K4511V | x | ✓ | ✓ | ✓ | ✓ | ✓ | ✓ | ✓ | ✓ | ✓ | ✓ | ✓ |
| BG | DM400AP | x | ✓ | ✓ | ✓ | ✓ | ✓ | ✓ | ✓ | ✓ | ✓ | ✓ | ✓ |
| RPP | RPP-DSP400X | ✓ | ✓ | ✓ | ✓ | ✓ | ✓ | ✓ | ✓ | ✓ | ✓ | ✓ | ✓ |

N.B GreenBrook are not responsible for any changes of specification of these dimmer models since the time of testing. Any component tolerances or changes of specification remain the responsibility of the dimmer manufacturer and are beyond our control.

VELA *Advance* & **COMPACT**

Tested to 30, 60 and 90 minutes

A Guide to 30, 60, 90 Minute Fire Rated Downlights.

Building regulation Part B specifies the level of fire protection required within different types of properties. There are separate 30 minute, 60 minute and 90 minute tests for fire rated downlights. In each test the ceiling configuration is different.

It is important that fire rated downlights pass all three tests separately as the difference in ceiling construction mean it is not safe to assume that passing the 90 minute test means a downlight would also pass the 30 and 60 minute tests.



When cutting a hole through a fire-rated ceiling to install a recessed downlight the integrity of the ceiling is compromised and this increases the risk of the spread of fire. It is important to choose a suitable fire rated downlight that will maintain the fire rating of the ceiling.

All GreenBrook fire rated downlights have been tested within 30, 60 and 90 minute ceilings.

A full photometric report and IES files for these fittings are available from our Technical Department.

LED 3W Emergency Driver - suitable for use with *VELA Advance* and **VELA Compact**

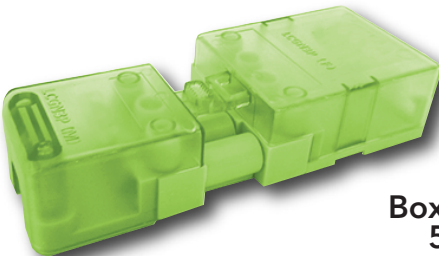
- ▶ Built in battery supplying 3 hours emergency operation in light of a mains failure
- ▶ Quick & easy to connect
- ▶ Compact & lightweight - screwless assembly
- ▶ Separate small green LED indicator giving status of battery charge
- ▶ Bezel mount for LED - for ease of installation in ceilings



Part No: LEDLEP

20 Amp Lighting Connector - suitable for use with *VELA Advance* and **VELA Compact**

- ▶ Time saving product for all your connecting requirements
- ▶ Male connector 1 x 2.5mm² 3 core flex and screw cord grip
- ▶ Female connector 3 x 2.5mm² twin and earth and loop terminal



Part No: LCGN3P

Box Qty
50

- ▶ Certified for 30, 60 or 90 minute fire rated ceilings
- ▶ Complete with quick connect driver
- ▶ Matt white bezel finish
- ▶ Low profile
- ▶ Additional bezels available - Satin Chrome & Polished Chrome
- ▶ Conforms to EN 60598-1,-2-2 and EN 61347-2-13

Fixed Fittings - 3000K & 4000K

Fixed - 3000K - IP65

Part No: LEDDLC3000W

Cut Out: 60mm

Total Lumens: 600

Fixed - 4000K - IP65

Part No: LEDDLC4000W

Cut Out: 60mm

Total Lumens: 620



Replacement Bezels

For Fixed Fittings

Part No Finish

LEDDLCBEZSC Satin Chrome

LEDDLCBEZPC Polished Chrome



Tilt Fittings - 3000K & 4000K

Tilt - 3000K - IP44

| Part No | Finish |
|---------------|-----------------|
| LEDDLTC3000W | White |
| LEDDLTC3000SC | Satin Chrome |
| LEDDLTC3000PC | Polished Chrome |

Cut Out: 76mm

Total Lumens: 600



White

Tilt - 4000K - IP44

| Part No | Finish |
|---------------|-----------------|
| LEDDLTC4000W | White |
| LEDDLTC4000SC | Satin Chrome |
| LEDDLTC4000PC | Polished Chrome |

Cut Out: 76mm

Total Lumens: 620



Satin Chrome



Polished Chrome



Technical Information

| | LEDDLTC3000W | LEDDLTC4000W | LEDDLTC3000W | LEDDLTC4000W | LEDDLTC3000PC | LEDDLTC4000PC | LEDDLTC3000SC | LEDDLTC4000SC |
|----------------------------|--------------------------------|-------------------|-------------------------------|-------------------|-------------------|-------------------|-------------------|-------------------|
| Product Finish | White | | White | White | Polished Chrome | Polished Chrome | Satin Chrome | Satin Chrome |
| Downlight Style | Fixed | | Tilt | | | | | |
| Cut Out | 60mm cut out | | 76mm cut out | | | | | |
| Size | W80mm x H51 | | W86.5 mm x H40 | | | | | |
| Product weight | 180g | | 220g | | | | | |
| Barcode | 5012739 644412 | 5012739 644429 | 5012739 644450 | 5012739 644467 | 5012739 644474 | 5012739 644481 | 5012739 644498 | 5012739 644504 |
| IP Rating | Fixed - IP65 | | Tilt - IP44 | | | | | |
| Lamp Type | LED - COB | | | | | | | |
| Tilt Angle | N/A | | 50° Inclusive (25° each side) | | | | | |
| Beam Angle | Fixed - 55° | | Tilt - 40° | | | | | |
| Class | II | | | | | | | |
| Colour Temp | 3000K | 4000K | 3000K | 4000K | 3000K | 4000K | 3000K | 4000K |
| Luminaire Lumens Output | 600, 86 lm/W | 620, 89 lm/W | 600, 86 lm/W | 620, 89 lm/W | 600, 86 lm/W | 620, 89 lm/W | 600, 86 lm/W | 620, 89 lm/W |
| Voltage | 230V ~ 50Hz | | | | | | | |
| Wattage | 7W | | | | | | | |
| CRI | >80 | | | | | | | |
| Ballast Type | LED Driver | | | | | | | |
| Guarantee | 3 Year | | | | | | | |
| Certification & Conformity | Conforms to Part B, C, E and L | | | | | | | |

Dimmers

The VELA **Compact** range of downlights are designed to be compatible trailing edge dimmers. GreenBrook have tested a selection of dimmers for compatibility with our product range...



| Dimmer Specification | | Number of Fittings | | | | | | | | | | | |
|----------------------|--------------|--------------------|---|---|---|---|---|---|---|---|----|----|----|
| Manufacturer Name | Dimmer Model | 1 | 2 | 3 | 4 | 5 | 6 | 7 | 8 | 9 | 10 | 11 | 12 |
| Varilight | JQP401W | ✓ | ✓ | ✓ | ✓ | ✓ | ✓ | ✓ | ✓ | ✓ | ✓ | ✓ | ✓ |
| Hamilton | H-LEDSTAT | ✓ | ✓ | ✓ | ✓ | ✓ | ✓ | ✓ | ✓ | ✓ | ✓ | ✓ | ✓ |
| Hamilton | LEDITB100 | ✓ | ✓ | ✓ | ✓ | ✓ | ✓ | ✓ | ✓ | ✓ | ✓ | ✓ | ✓ |
| Zano | ZGRIDLED | ✓ | ✓ | ✓ | ✓ | ✓ | ✓ | ✓ | ✓ | ✓ | ✓ | ✓ | ✓ |
| Schneider | GGBL6012LS | ✓ | ✓ | ✓ | ✓ | ✓ | ✓ | ✓ | ✓ | ✓ | ✓ | ✓ | x |
| Danlers | DQDGEU400W | ✓ | ✓ | ✓ | ✓ | ✓ | ✓ | ✓ | ✓ | ✓ | ✓ | ✓ | ✓ |

N.B GreenBrook are not responsible for any changes of specification of these dimmer models since the time of testing. Any component tolerances or changes of specification remain the responsibility of the dimmer manufacturer and are beyond our control.

Thermal Testing

VELA Compact downlights have been independently tested to the British Standard 60598-1 Clause 12.4 by the Lighting Industry Association.

Contact us for copies of the full test report.



Insulation can be placed directly over the fitting



VELA Range


Lighting Ideas...



 +44 (0) 1279 772 772

 sales@greenbrook.co.uk

**GREEN
BROOK**
ELECTRICAL

 +44 (0) 1279 422 007

 www.greenbrook.co.uk