



UNICRIMP®

FIRE ACCESSORIES

Q-FIRE

**THE COMPLETE
FIRE RANGE**

www.unicrimp.com

DON'T GET CAUGHT OUT BY THE LATEST REGS

Prevent cables from premature collapse during a fire and keep emergency services and the public safe

BS7671 IET Wiring Regulations 18th Edition, Chapter 52: Selection and erection of wiring systems, provides requirements for the methods of support of wiring systems in escape routes.

Section 527.1 Precautions within a fire-segregated compartment, regulation 527.1.3 notes that where the compartment provides a means of evacuation in an emergency the cables also need to satisfy the requirements of the CPR in respect of their reaction to fire.

Regulation 521.10.202 requires cables to be adequately supported against their premature collapse in the event of a fire. This applies throughout the installation and not just in escape routes.

SADDLE CLIPS & P CLIPS

LSF Coated Metal Fire Clips

- Assist installation of fire cable to meet the requirement of BS 5839-1: 2017
- Tested & approved to BS 476 Pt.6 and BS 476 Pt.7
- Protective LSF coating to prevent cable damage



Part Number	Description	Colour	Ref.	1mm	1.5mm	2.5mm	4mm	Fixing Dia.	Pack Qty
QSC302LSFR	Red 302 Saddle Clip LSF	Red	302	3L/1.0	2L/1.5			5mm	50
QSC302LSFB	Black 302 Saddle Clip LSF	Black	302	3L/1.0	2L/1.5			5mm	50
QSC302LSFW	White 302 Saddle Clip LSF	White	302	3L/1.0	2L/1.5			5mm	50
QSC342LSFR	Red 342 Saddle Clip LSF	Red	342	4L/1.0	3L/1.5 - 4L/1.5	2L/2.5 - 3L/2.5		5mm	50
QSC342LSFB	Black 342 Saddle Clip LSF	Black	342	4L/1.0	3L/1.5 - 4L/1.5	2L/2.5 - 3L/2.5		5mm	50
QSC342LSFW	White 342 Saddle Clip LSF	White	342	4L/1.0	3L/1.5 - 4L/1.5	2L/2.5 - 3L/2.5		5mm	50
QSC382LSFR	Red 382 Saddle Clip LSF	Red	382				2L/4.0	5mm	50
QSC382LSFB	Black 382 Saddle Clip LSF	Black	382				2L/4.0	5mm	50
QSC382LSFW	White 382 Saddle Clip LSF	White	382				2L/4.0	5mm	50
QPC28LSFR	Red 28 P Clip LSF	Red	28	3L/1.0	2L/1.5			5mm	50
QPC28LSFB	Black 28 P Clip LSF	Black	28	3L/1.0	2L/1.5			5mm	50
QPC28LSFW	White 28 P Clip LSF	White	28	3L/1.0	2L/1.5			5mm	50
QPC30LSFR	Red 30 P Clip LSF	Red	30	4L/1.0	3L/1.5			5mm	50
QPC30LSFB	Black 30 P Clip LSF	Black	30	4L/1.0	3L/1.5			5mm	50
QPC30LSFW	White 30 P Clip LSF	White	30	4L/1.0	3L/1.5			5mm	50
QPC32LSFR	Red 32 P Clip LSF	Red	32			2L/2.5		5mm	50
QPC32LSFB	Black 32 P Clip LSF	Black	32			2L/2.5		5mm	50
QPC32LSFW	White 32 P Clip LSF	White	32			2L/2.5		5mm	50
QPC34LSFR	Red 34 P Clip LSF	Red	34		4L/1.5	3L/2.5		5mm	50
QPC34LSFB	Black 34 P Clip LSF	Black	34		4L/1.5	3L/2.5		5mm	50
QPC34LSFW	White 34 P Clip LSF	White	34		4L/1.5	3L/2.5		5mm	50
QPC37LSFR	Red 37 P Clip LSF	Red	37			4L/2.5	2L/4.0	5mm	50
QPC37LSFB	Black 37 P Clip LSF	Black	37			4L/2.5	2L/4.0	5mm	50
QPC37LSFW	White 37 P Clip LSF	White	37			4L/2.5	2L/4.0	5mm	50

ALL-ROUND BANDING

Versatile All-Round Fixing Band

- Protective LSF coating to prevent cable damage
- Pre-punched steel banding ideal for fixing, general construction
- Highly versatile multi-purpose fixing band
- Easy to cut and bend



Part Number	Description	Inner Hole Diameter	Banding Width	Colour	Pack Qty
QARB12B	Black All Round Banding 12mm x 10M	5mm	12mm	Black	1
QARB17B	Black All Round Banding 17mm x 10M	7mm	17mm	Black	1
QARB12W	White All Round Banding 12mm x 10M	5mm	12mm	White	1
QARB12R	Red All Round Banding 12mm x 10M	5mm	12mm	Red	1
QARB12G	Galvanised All Round Banding 12mm x 10M	5mm	12mm	Galvanised	1
QARB17G	Galvanised All Round Banding 17mm x 10M	7mm	17mm	Galvanised	1

FIRE-SAFE CABLE CLIPS

Fire Rated Cable Clips For Trunking

- Cable clips prevent cables dropping in the event of fire
- Can be used in PVC trunking or surface mounted
- 25mm to 50mm Trunking size Options
- Up-to 120min Fire Rating
- Non-Corrosive Finish
- Ideal for Ceiling Voids



Part Number	Description	Suitable Trunking Size	Pack Qty
QFGFC25	Fire-Safe Cable Clips 25mm	25mm	10
QFGFC40	Fire-Safe Cable Clips 40mm	40mm	10
QFGFC50	Fire-Safe Cable Clips 50mm	50mm	10

STAINLESS STEEL ROLLER BALL CABLE TIES

- Minimum loop tensile strength
4.6mm wide = 44kg
 - Minimum loop tensile strength
7.9mm wide = 110kg
 - High quality 316 grade stainless steel cable ties
- Dimensions A, D & E: Nominal
Dimensions B & C: +/-0.4mm

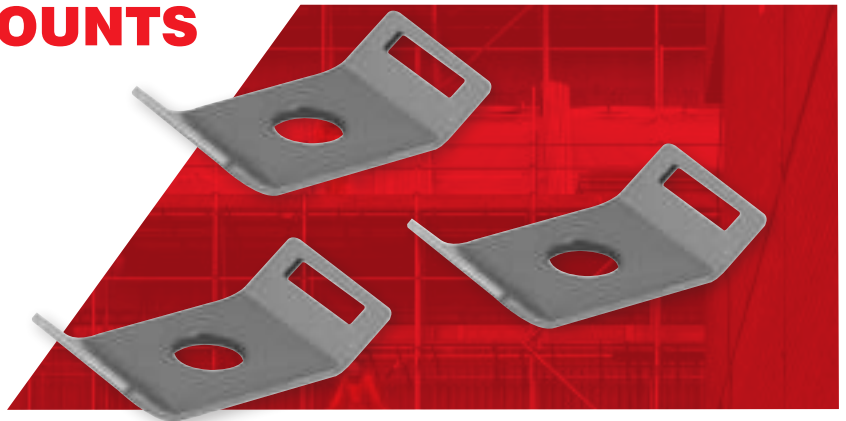


Part Number	A	B	C	D	E	Bundle Dia. Max.	Pack Qty
QSST150S	150mm	4.6mm	0.25mm	6.4mm	4mm	35mm	100
QSST200S	200mm	4.6mm	0.25mm	6.4mm	4mm	50mm	100
QSST300S	300mm	4.6mm	0.25mm	6.4mm	4mm	83mm	100
QSST360S	360mm	4.6mm	0.25mm	6.4mm	4mm	100mm	100
QSST520S	520mm	4.6mm	0.25mm	6.4mm	4mm	150mm	100
QSST300LH	300mm	7.9mm	0.25mm	10.6mm	5.4mm	83mm	100
QSST360LH	360mm	7.9mm	0.25mm	10.6mm	5.4mm	100mm	100
QSST520LH	520mm	7.9mm	0.25mm	10.6mm	5.4mm	150mm	50
QSST840LH	840mm	7.9mm	0.25mm	10.6mm	5.4mm	250mm	50

STAINLESS STEEL MOUNTS

Stainless Steel Cable Tie Mount

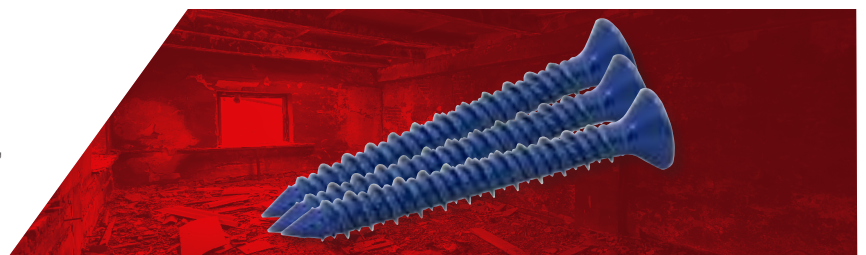
- Stainless steel cable tie mounts with M4 or M6 fixing hole, pack of 50
- Can be used with cable ties up to 10mm wide
- For indoor and outdoor use, fully weather, UV and fire resistant
- High quality 316 grade stainless steel



Part Number	Description	Dimensions	Fixing Dia.	Max. Tie Width	Pack Qty
QSSTM-4	Stainless Steel Cable Tie Mount M4	15 x 29.20 x 5mm	4.2mm	10mm	50
QSSTM-6	Stainless Steel Cable Tie Mount M6	15 x 29.20 x 5mm	6.2mm	10mm	50

MASONRY SCREW

- M4.8 x 40MM Masonry Screw
- Use to fasten various fixtures directly to drywall, wood, concrete, sand / lime stone or brickwork
- No plug needed



Part Number	Description	Length	Thread Dia.	Pack Qty
QMA48-40	4.8 x 40mm Masonry Fixing Screw - Blue	40mm	4.8mm	100